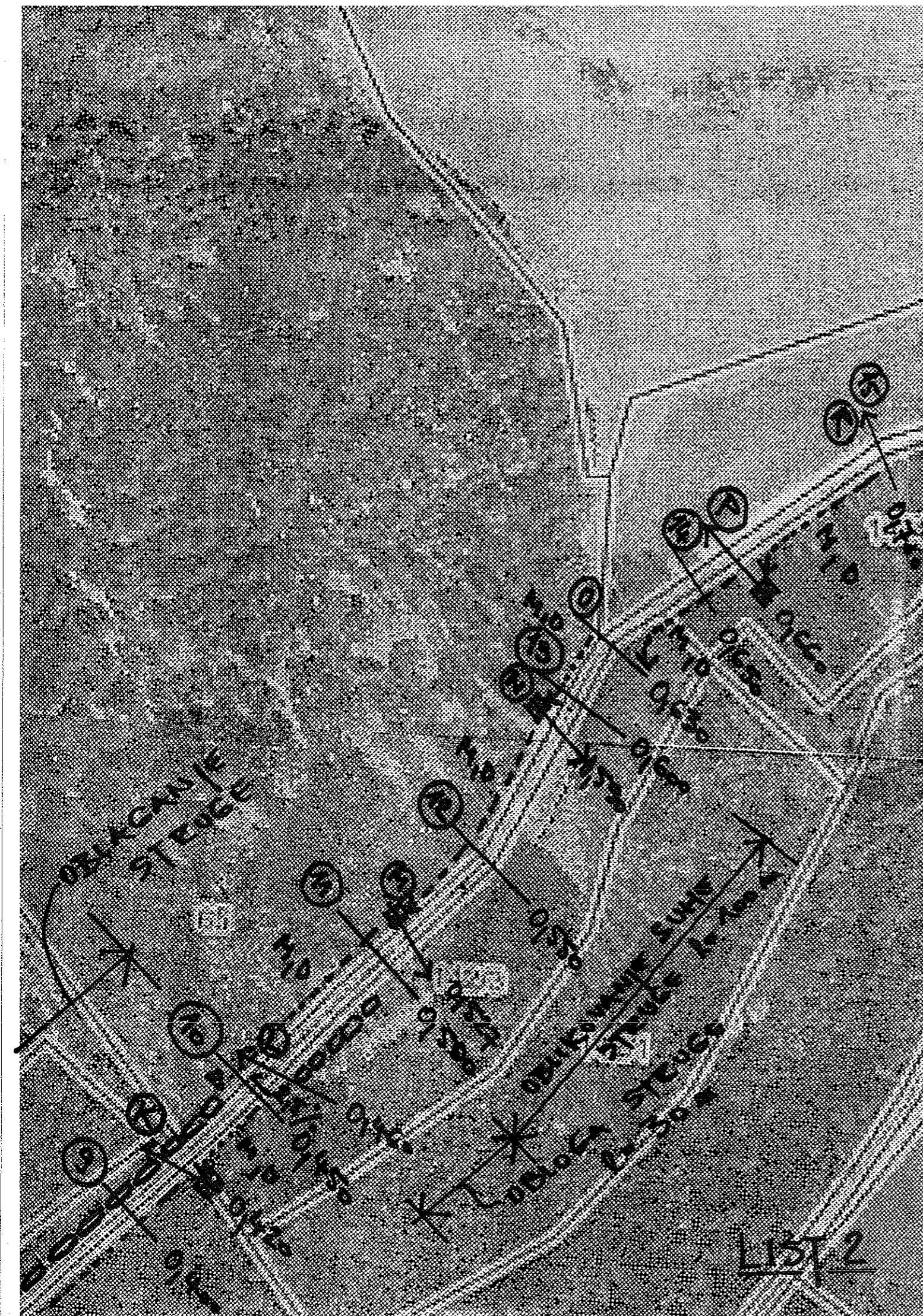


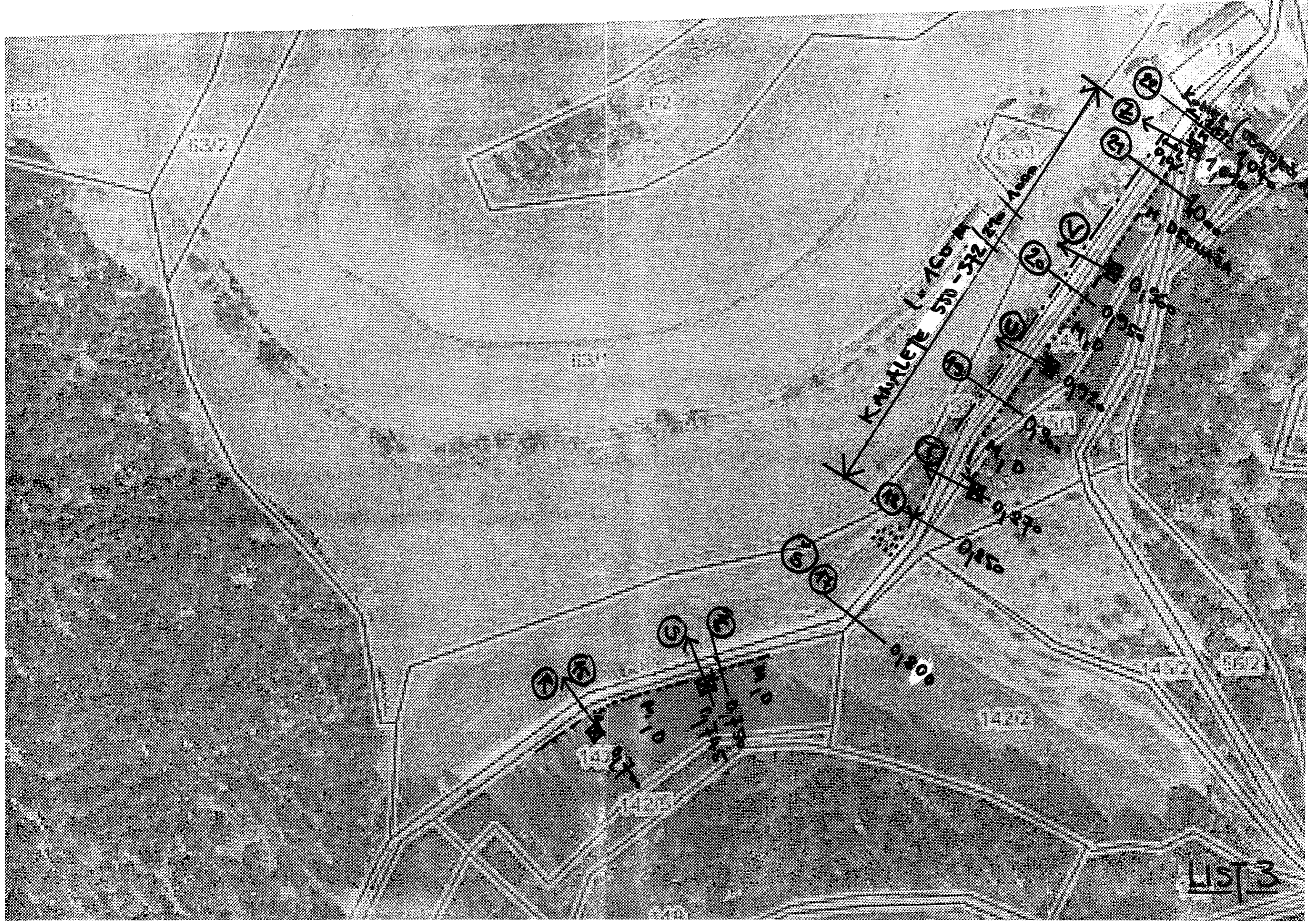
MODERNIZACIJA lokalne ceste LC 226150
 ZAVRATEC - VEH SV. TREN KEALJEV
 od km 2,050 - km 3,100 (l=1,050) HIEVIŠE-
 DOLINA)

0,100 L. zadrževanje

LIST 1



LIST 2



KAMULELE (*700 M) 530-332 276-1000

KAMULELE

KAMULELE

LIS 3